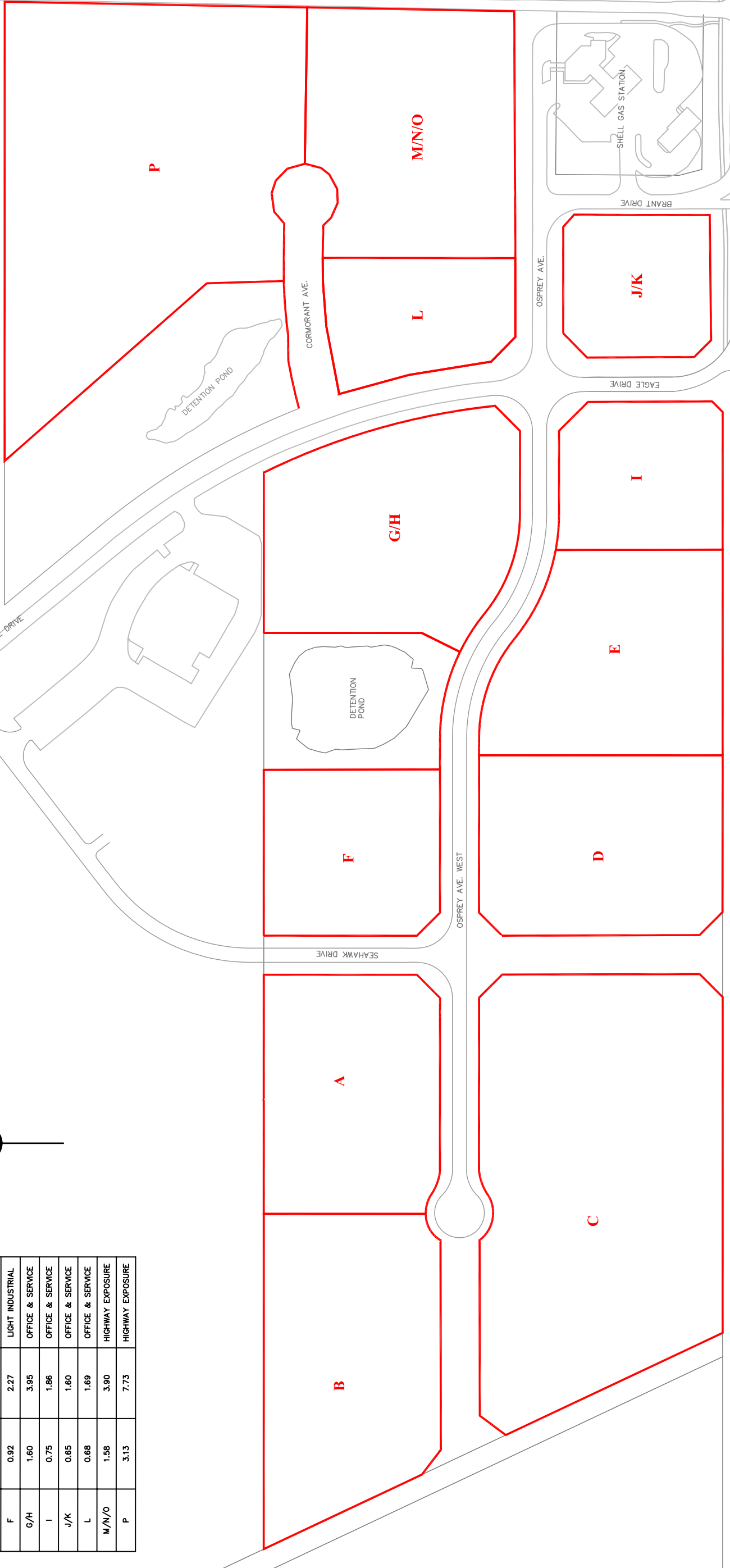
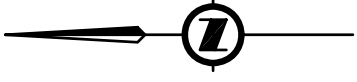


QUINSAM CROSSING DEVELOPMENT

LOT ANALYSIS			
LOT #	AREA (ha)	AREA (ac)	PROPOSED USE
A	1.32	3.26	LIGHT INDUSTRIAL
B	1.63	4.04	LIGHT INDUSTRIAL
C	3.16	7.81	LIGHT INDUSTRIAL
D	1.37	3.39	LIGHT INDUSTRIAL
E	1.38	3.41	LIGHT INDUSTRIAL
F	0.92	2.27	LIGHT INDUSTRIAL
G/H	1.60	3.95	OFFICE & SERVICE
I	0.75	1.86	OFFICE & SERVICE
J/K	0.65	1.60	OFFICE & SERVICE
L	0.68	1.69	OFFICE & SERVICE
M/N/O	1.58	3.90	HIGHWAY EXPOSURE
P	3.13	7.73	HIGHWAY EXPOSURE



**ANDERSON CIVIL
CONSULTANTS INC.**

#2068-335 Wesley Street, Nanaimo, B.C. V9R 2T5
Tel: 250.754.1877 Fax: 250.754.4375 email: chilling@andersoncivil.com



Revised 6 April 2010

Dwg 2118-D-Base-7.3

INLAND ISLAND HIGHWAY

EAGLE DRIVE

SEAHAWK DRIVE

OSPREY AVE. WEST

CORMORANT AVE.

OSPREY AVE.

EAGLE DRIVE

BRANT DRIVE

WILLIS ROAD

FARWELL DRIVE

DETENTION POND

DETENTION POND

SHELL GAS STATION